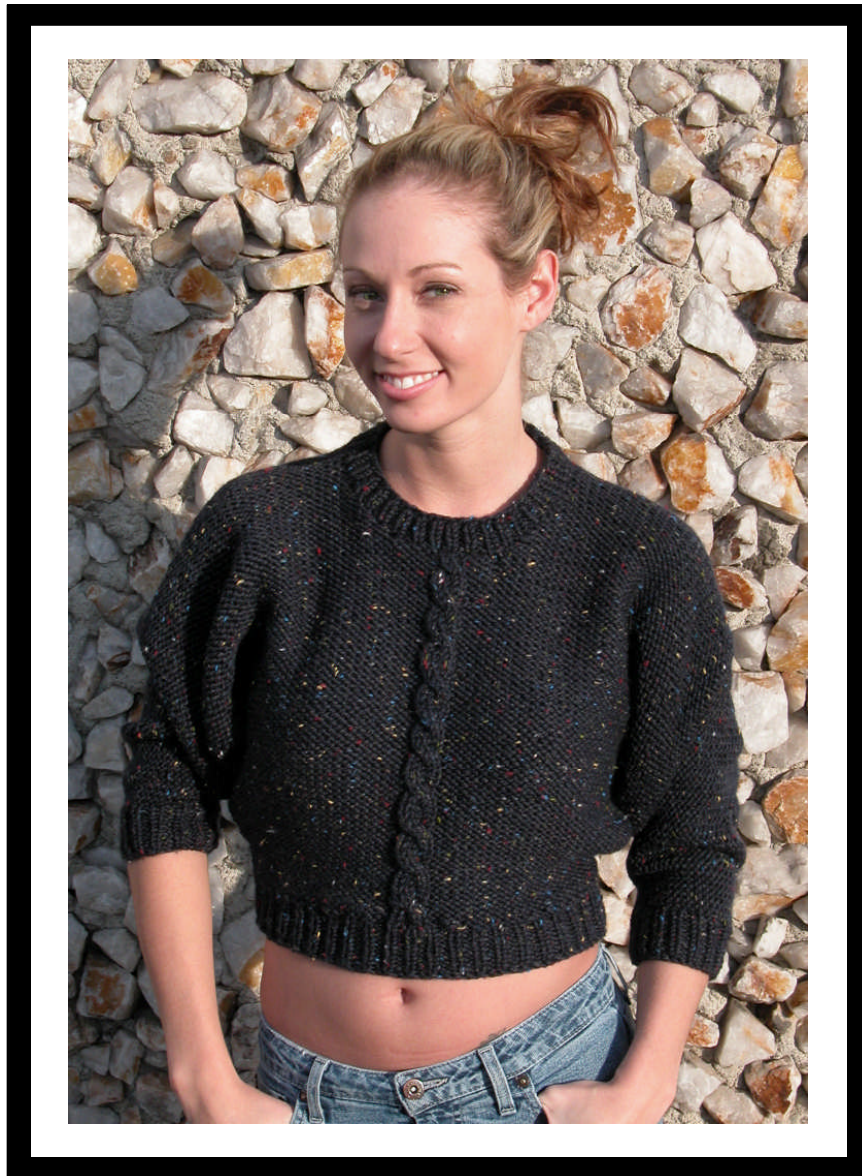




**Dolman Sleeve Pullover (C162)
Using Cascade 128 Chunky Tweed Pattern**



Dolman Sleeve Pullover (C162)

Designed by Dottie Chin

Sizes: Small (30-32) Medium (3-36) Large (38)

Materials:

5(6,6) balls of Cascade 128 tweed
Size 7 circular needle 16"
Size 10 circular needle 29" or longer
Cable needle

Gauge: 14 sts = 4"

Sweater is worked in one piece

Body Front

With smaller needle, cast on 45(49, 53) sts. Work in k1, p1 rib for 2". Inc 7 sts evenly across last WS row. 52(56, 60) sts. Change to larger needle and begin cable pat as follows: **Row 1:** (RS) P24(26, 28), k4, p24(26, 28). **Row 2:** k24(26, 28), p4, k24(26, 28). **Row 3:** Rep row 1. **Row 4:** Rep row 2. **Row 5:** Inc 1 st in first st, p23(25, 27), slip next 2 sts onto cable needle and hold in front of work, k next 2 sts, k2 sts from cable needle, p23(25, 27), inc 1 st in last st. **Row 6:** Inc 1 st in first st, k to center cable, p4, k to last st, inc 1 st in last st.. **Row 7:** Inc 1 st in first st, p to center cable, k4, p to last st inc 1 st in last st. **Row 8:** Rep row 6. **Row 9:** Rep row 7. **Row 10:** Rep row 6. **Row 11:** Inc 1 st in first st, p t center cable, work cable twist, p to last st, inc 1 st in last st. Rep rows 6-11 for cable pat and dolman sleeve inc until there are 148 (156, 162) sts endin with a WS row.. Cont to work cable, work 6(8, 10) rows even, end with a WS row

Neck Opening:

Next row: (RS) P58(72, 74). Join 2nd ball of yarn and bind off center 12(12, 14) sts in pat. P rem 68(72, 74) sts. Working both sides at same time, dec 1 st at each neck edge on every RS row 5 times, 63(67, 69) sts each side. Work even until neck opening meas 3" from bound-off sts. End with a WS row.

Back

Next row: (RS) P63(67, 69) sts, cast on 22(22, 24) sts for back of neck, p rem 63(67, 69) sts. **Next row:** K148(156, 162) sts. Work even in pat without cable until 4(4 1/2, 5) " from beg of back. **Next row:** Dec 1 st at each end of row. Cont to dec 1 st at each end on every row until 52(56, 60) sts rem. Work 4 rows even. Change to smaller needle and work in k1, p1 rib, dec 7 sts evenly across next row, 45(49, 53) sts. Work in k1, p1 for 2". Bind off loosely.

Finishing Neck: With RS facing and smaller needle, beg at left shoulder side, pick up and k38 (38, 40) sts along front neck edge and 22(22, 24) sts along back of neck (60, 60, 64) sts. Work in k1, p1 for 2". Bind off loosely.

Sleeve cuffs: With RS facing and smaller needle, pick up 34(38, 40) sts along edge of sleeve. Work in k1, p1 for 2". Bind off loosely.

Sew up side seams.